

SLENDER

through-beam photoelectric switch



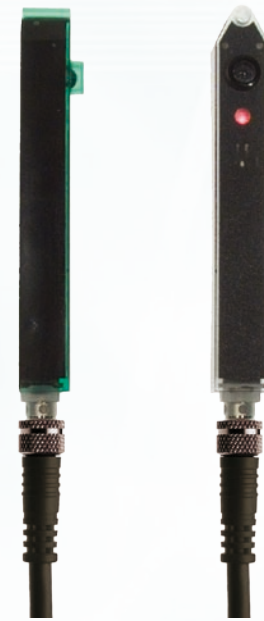
WITT
Sensoric

Optoelectronic systems

Operating gates safely

SLENDER *through-beam photoelectric switch*

- ◇ Slim design
- ◇ Long range
- ◇ Easy adjustment
- ◇ Big aperture angle
- ◇ High degree of protection, IP67
- ◇ Fully epoxy resin filled
- ◇ Transmitter with test input
- ◇ Light/dark-on programmable
- ◇ Protected against power supply polarity reversal
- ◇ Plug connection
- ◇ Front LED indicator
- ◇ Insensitive against ambient light



Functional Description

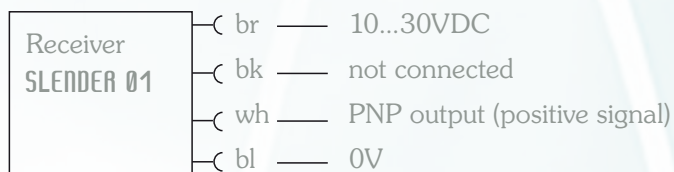
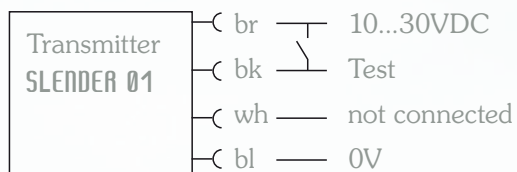
The **SLENDER** photo switch is perfectly suitable to fit in profiles due to the very slim design. Because of the big aperture angle and the large range this photo switch is very easy to align. The optical discharge and the indicator LED are right at the front. The **SLENDER** photo switch is optimally suited for outside use. Sunlight or other external light sources are no problem for the functionality. The **SLENDER** is usable as a class 2 safety light barrier due to the test input. The type of switching at the output is programmable if required. The **SLENDER** is very good protected against vandalism because of its positioning on the door.

Technical Data

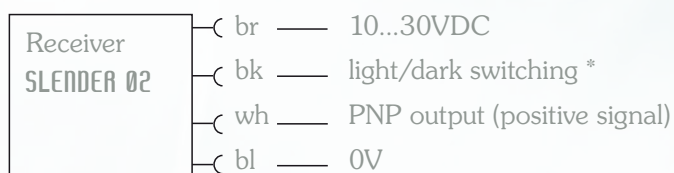
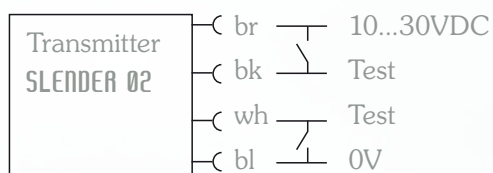
Range	0...13m	Output	PNP or NPN, max. 200mA short-circuit proofed
Operating voltage	10...30VDC	Switching delay	max. 25ms
Current consumption	transmitter: 25mA receiver: 7mA	Type of switching	light-on or dark-on programmable
Type of light	IR, 880nm	Degree of protection	IP67 according to EN60529, filled with 2K-epoxy resin
Aperture angle	15° round angle	Operating temperature	-25...+55°C
Extra function	transmitter: test input receiver: light/dark on progr.	Casing material	PC, transparent coloured
Indicators	transmitter: LED green receiver: LED green/red red LED is illuminated with active output	Type of connection	4-pin plug, M8 or Snap-in

Output Variation

SLENDER 01



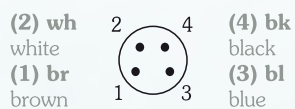
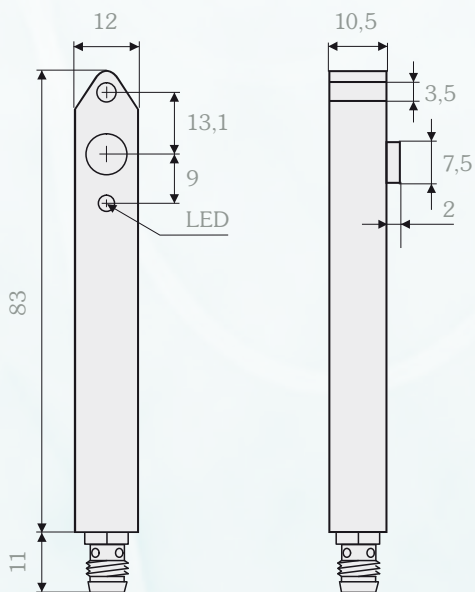
SLENDER 02



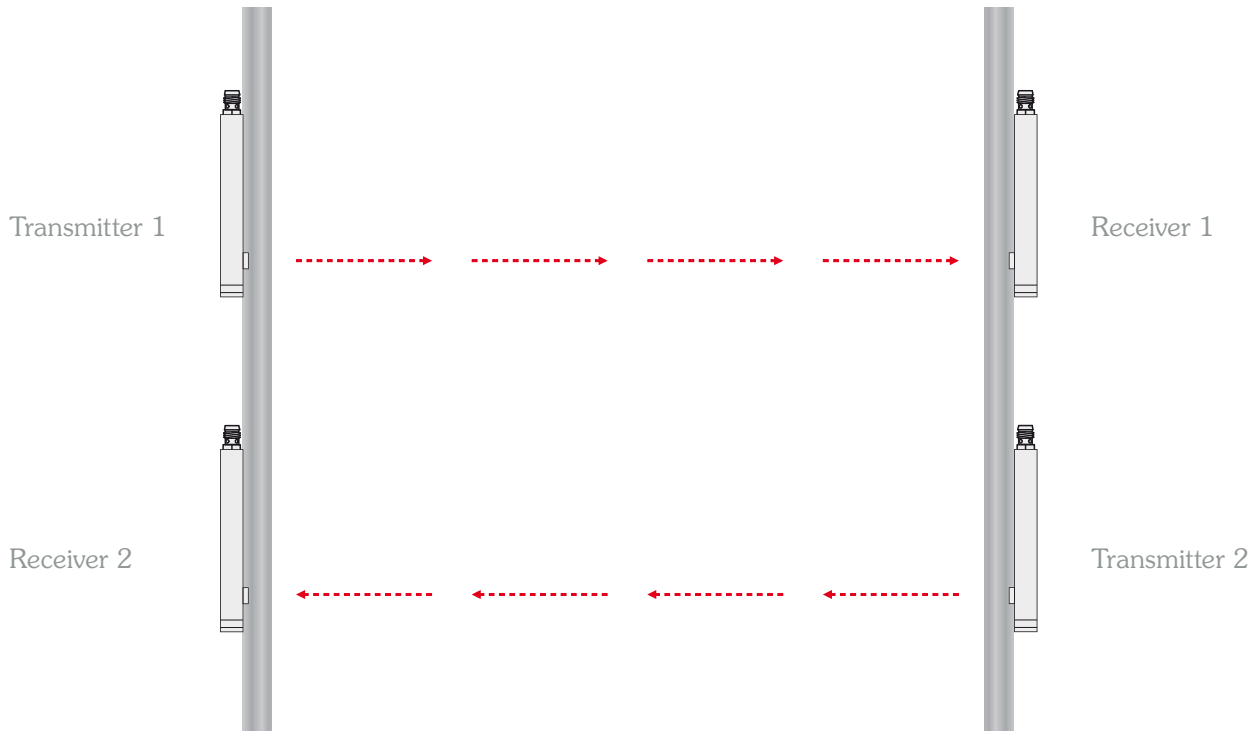
* — bk — open light on
0V dark on

Option: NPN output (negative signal)

Size



Example of installation for 2 sets of photo-switches

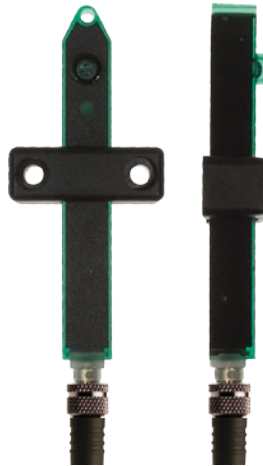


Different installation options

Adhesive tape



Bracket



Optoelectronic systems direct from the manufacturer

- Development
- Design
- Manufacture
- Sales

We make only optoelectronics – and we do it right



Witt Sensoric GmbH
Gradestraße 48-50 · 12347 Berlin · Germany
Tel.: +49 (0) 30 / 75 44 94-0
Fax: +49 (0) 30 / 75 44 94-11
info@witt-sensoric.de
www.witt-sensoric.de