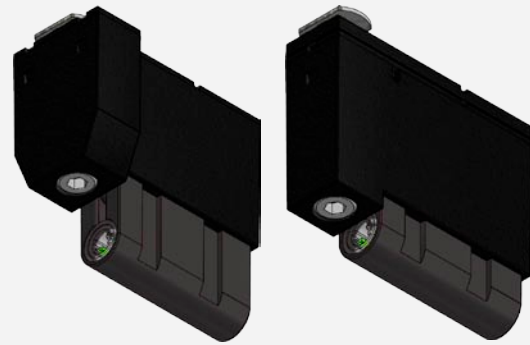


nocon

*non contact safety edge*



**WITT**  
Sensoric

Optoelectronic systems

*Operating gates safely*

*The NOCON is a modular system for easy series assembling respectively converting the standard rubber profile safety edge into a non-contact system.*

- ◇ Non contact safety edge
- ◇ Very small or no closing forces
- ◇ Faster door closing possible
- ◇ Trouble-free assembling
- ◇ Integrated approach stopper
- ◇ Compatible with all common door controls
- ◇ Easy retrofitting without design change on the door
- ◇ Regulated transmit power for door width adaptation
- ◇ LED-indicator
- ◇ High electromagnetic interference immunity
- ◇ Insensitive against ambient light
- ◇ Low-maintenance construction
- ◇ Large door width possible



## **Functional Description**

The non contact safety edge **NOCON** is the ideal combination of functionality, safety and easy assembling.

The **NOCON** is suitable for series production but also very easy to use for retrofitting as an alternative for the approach stopper. No design changes on the door are necessary. The safety light beam runs beneath the door rubber profile and because of that obstructions will be recognised without contact. Through this faster door closing is possible without exceeding of permitted closing forces.

## **Technical Informations**

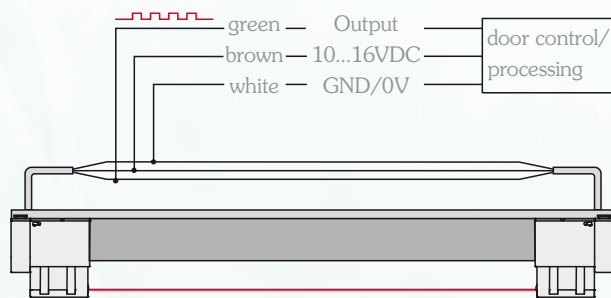
The non contact safety edge **NOCON** includes the innovative **SIGNAL**-sensors with their integrated diagnostic system. To realise this, the transmitter has got an all around visible yellow ring LED. When switched on, the optical values of the rubber profile are measured and indicated with a flash code with 1...16 impulses.

One impulse is the best value and 16 impulses indicates, that the limit of the optoelectronic system is reached. After displaying the diagnostic value the **SIGNAL** changes to the normal operation mode. Now the triggering of the safety edge is displayed by the LED.

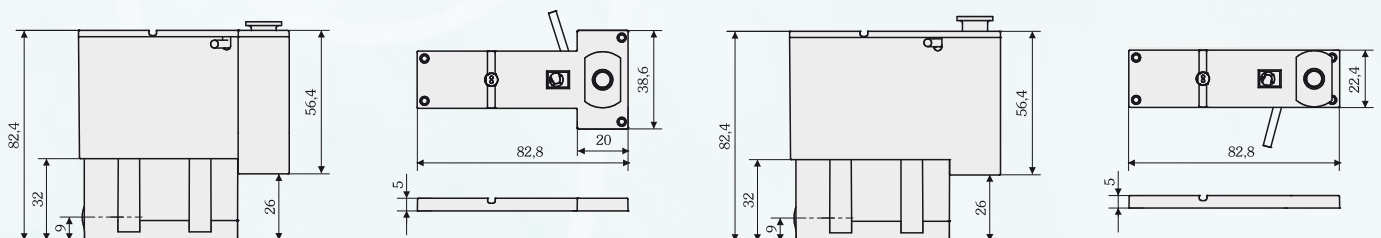
## Technical Data

Range	1...8m	Housing material	transmitter, plastic PA6 receiver, Lexan, IR transparent
Operating voltage	10...16VDC,	<b>NOCON</b>	PA6 GF30
Current consumption	approx. 50mA	Mounting material	screw and Jetnut M8
Type of light	infrared, 880nm pulsed	Wire	3x0.14mm <sup>2</sup> , ø 3.4mm, PUR, halogen free, acid- and oil-resistant
Diagnostics display	yellow ring-shaped LED for rubber profile diagnostics, flashes with 1...16 impulses	Degree of protection	IP67 according to EN60529, filled with 2K-epoxy resin
Operation display	yellow ring-shaped LED is on when safety edge is triggered	Operating temperature	-25...+75°C
Output	transistor-output, max. load 20mA, short-circuit proofed	Storage temperature	-25...+75°C
Output signal	typ. 900Hz low-level 0...1V high-level 3...5V	Weight	approx. 21g with 1m cable approx. 155g with 10.5m cable
		Size	ø12x39mm

## Terminal Assignments



## Maße




*NOCON-sec*  
für Sektionaltore

*NOCON-roll*  
für Roll- und Rollgittertore

# Certificates

The non-contact safety edge **NOCON** includes the innovative **SIGNAL**-sensors with their integrated diagnostic system.



## EG-Baumusterbescheinigung

*EC type-examination certificate*

**Registrier-Nr.**  
*Registration No.*  
**44 205 07 554045**

<b>Zeichen des Auftraggebers</b> <i>Customer's reference</i>	<b>Auftragsdatum</b> <i>Date of order</i> 02.08.2007	<b>Aktenzeichen</b> <i>File reference</i> 8000554045	<b>Prüfbericht Nr.</b> <i>Test report no.</i> 0720554045
---	--	--	--

**Name und Anschrift des Auftraggebers**      **Witt Sensoric GmbH**  
Gradestraße 48-50  
D-12347 Berlin      *Customer's name and address*

**Erfüllt mit dem u. g. Produkt die Anforderungen des Anhangs I der Maschinenrichtlinie 98/37/EG als eine Grundlage für die EG -Konformitätserklärung bzw. die Herstellererklärung.**  
*The product described below meets the requirements of annex I of the directive 98/37/EC as a basis for the EC - declaration of conformity or the manufacturer's declaration of incorporation.*

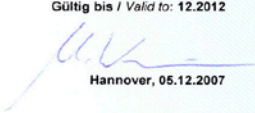
<b>Geprüft nach</b>	<b>Maschinenrichtlinie 98/37/EG</b> <b>EN 12978:2003 Schutzeinrichtungen für kraftbetätigte Türen und Tore</b> <b>Anforderungen und Prüfverfahren</b>	<i>Tested in accordance with</i>
---------------------	---	----------------------------------

<b>Beschreibung des Produktes</b>	<b>Schaltleiste mit Sicherheitsauswerter zur Verwendung an Toren im Innen- und Außenbereich</b> <b>Schließgeschwindigkeit bis 200 mm/s</b> <b>Nachlaufweg: max. 30 mm</b>	<i>Description of product</i>
-----------------------------------	---	-------------------------------

<b>Typenbezeichnung</b>	<b>Sicherheitsauswerter AOS 3000 / AOS 5000 mit optoelektronischer Schließkantensicherung SIGNAL in Gummiprofil GP15/25x75 + Adapter 15/12</b>	<i>Type Description</i>
-------------------------	--	-------------------------

<b>Bemerkung</b>	<b>Bitte beachten Sie auch die umseitigen Hinweise</b> <i>Please also pay attention to the information stated overleaf</i>	<i>Remark</i>
------------------	---	---------------

**TÜV NORD CERT GmbH**  
Zertifizierungsstelle für Produktsicherheit  
*Certification body for product safety*  
Benannte Stelle 0044 / *Notified Body 0044*

**Gültig bis / Valid to: 12.2012**  
  
**Hannover, 05.12.2007**

Langemarckstr. 20 • 45141 Essen • Fon +49 (0)201 825 5120 • Fax +49 (0)201 825 3209 • Email: [machinery@tuv-nord.de](mailto:machinery@tuv-nord.de)

Optoelectronic systems direct from the manufacturer

- Development
- Design
- Manufacture
- Sales

*We make only optoelectronics – and we do it right*



Witt Sensoric GmbH  
Gradestraße 48-50 · 12347 Berlin · Germany  
Tel.: +49 (0) 30 / 75 44 94-0  
Fax: +49 (0) 30 / 75 44 94-11  
[info@witt-sensoric.de](mailto:info@witt-sensoric.de)  
[www.witt-sensoric.de](http://www.witt-sensoric.de)