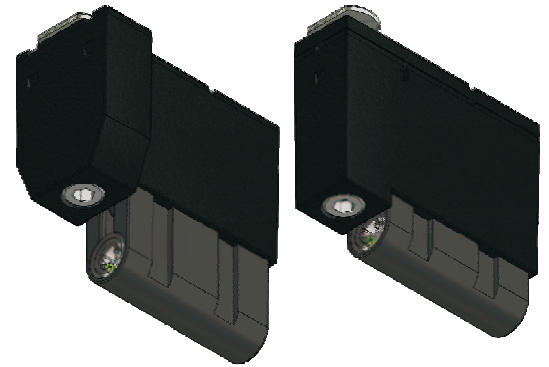


NOCON non contact safety edge

NOCON non contact safety edge

- Non contact safety edge
- Very small or no closing forces
- Faster door closing possible
- Trouble-free assembling
- Integrated approach stopper
- Easy retrofitting without design change on the door
- Compatible with all common door controls
- Regulated transmit power for door width adaptation
- LED-indicator
- High electromagnetic interference immunity
- Insensitive against ambient light
- Low-maintenance construction
- Large door width possible



Declaration of conformity

EMC directive 2004/108/EEC
EN 61000-6-2 and EN 61000-6-4
Safety devices for power operated
doors and gates
EN 12978



Technical data

Range	1...8m	Housing material	transmitter, plastic PA6 receiver, Lexan, IR transparent
Operating voltage	10...16VDC,	NOCON	PA6 GF30
Current consumption	approx. 50mA	Mounting material	screw and Jetnut M8
Type of light	infrared, 880nm pulsed	Wire	3x0.14mm ² , ø 3.4mm, PUR, halogen free, acid- and oil-resistant
Diagnostics display	yellow ring-shaped LED for safety edges, flashes with 1...16 impulses	Degree of protection	IP67 according to EN60529, filled with 2K-epoxy resin
Operation display	yellow ring-shaped LED is on when safety edge is triggered	Operating temperature	-25...+75°C
Output	transistor-output, max. load 20mA, short-circuit proofed	Storage temperature	-25...+75°C
Output signal	typ. 900Hz low-level 0...1V high-level 3...5V	Weight	approx. 21g with 1m cable approx. 155g with 10.5m cable
		Size	ø12x39mm

Technical Informations

The non contact safety edge **NOCON** includes the innovative **SIGNAL**-sensors with their integrated diagnostic system. To realise this, the transmitter has got an all around visible yellow ring LED. When switched on, the optical values of the safety edge are measured and indicated with a flash code with 1...16 impulses.

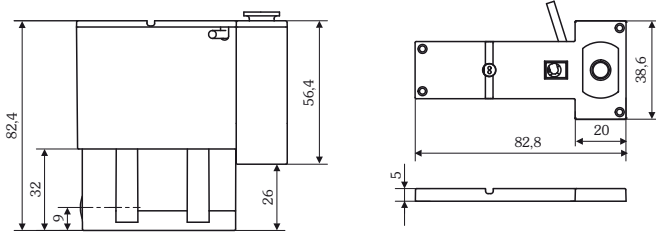
One impulse is the best value and 16 impulses indicates, that the limit of the optoelectronic system is reached. After displaying the diagnostic value the **SIGNAL** changes to the normal operation mode. Now the triggering of the safety edge is displayed by the LED. The **NOCON** is a modular system for easy series assembling respectively converting the standard rubber profile safety edge into a non-contact system.

Functional Description

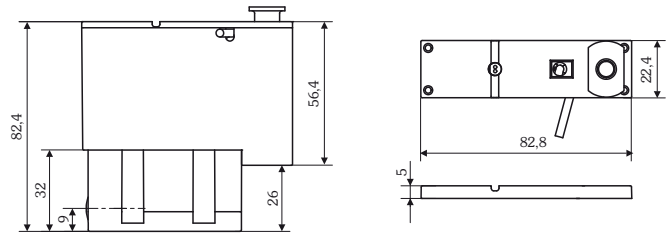
The non contact safety edge **NOCON** is the ideal combination of functionality, safety and easy assembling. The **NOCON** is suitable for series production but also very easy to use for retrofitting as an alternative for the approach stopper. No design changes on the door are necessary. The safety light beam runs beneath the door rubber profile and because of that obstructions will be recognised without contact. Through this faster door closing is possible without exceeding of permitted closing forces.

Size

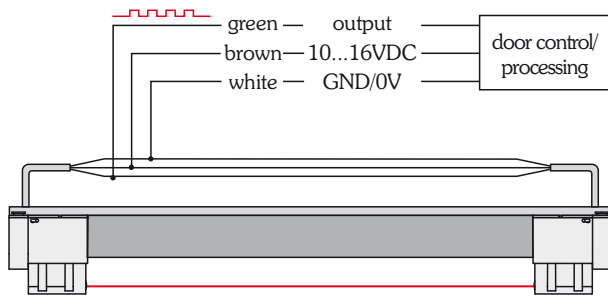
NOCON for sectional doors



NOCON for roller shutters



Terminal Assignments



Ordering details

NOCON for sectional doors

Version with open ends

Transmitter

(standard cable lengths: 0,5m / 1,0m)

Receiver

(standard cable lengths: 0,5m / 1,0m / 10,5m)

Version with Molex connector

Transmitter

(standard cable lengths: 0,5m / 1,0m)

Receiver

(standard cable lengths: 0,5m / 1,0m / 10,5m)

Spare body (without sensor)

Extension modul

Order number

NOCON-T 1.114 480/Xm sec

NOCON-R 1.114 490/Xm sec

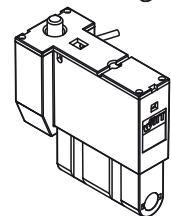
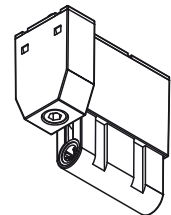
Artikelnr.

NOCON-T 1.114 485/Xm sec

NOCON-R 1.114 495/Xm sec

NOCON-sec 1.114 481 sec

NOCON-sec-e 1.114 482 sec



NOCON for roller shutters

Version with open ends

Transmitter

(standard cable lengths: 0,5m / 1,0m)

Receiver

(standard cable lengths: 0,5m / 1,0m / 10,5m)

Version with Molex connector

Transmitter

(standard cable lengths: 0,5m / 1,0m)

Receiver

(standard cable lengths: 0,5m / 1,0m / 10,5m)

Spare body (without sensor)

Extension modul

Artikelnr.

NOCON-T 1.114 500/Xm roll

NOCON-R 1.114 520/Xm roll

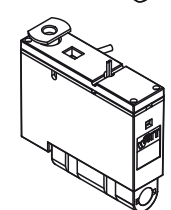
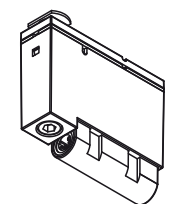
Artikelnr.

NOCON-T 1.114 505/Xm roll

NOCON-R 1.114 525/Xm roll

NOCON-roll 1.114 501 roll

NOCON-roll-e 1.114 502 roll



Example:

NOCON for sectional doors, transmitter with 1m cable

NOCON-T 1.114 480-010 sec

NOCON for roller shutters, receiver with 10,5m (Molex)

NOCON-R 1.114 525-105 roll

The entire NOCON series can be supplied in series with other cable lengths.