

EL25

through-beam photoelectric switch



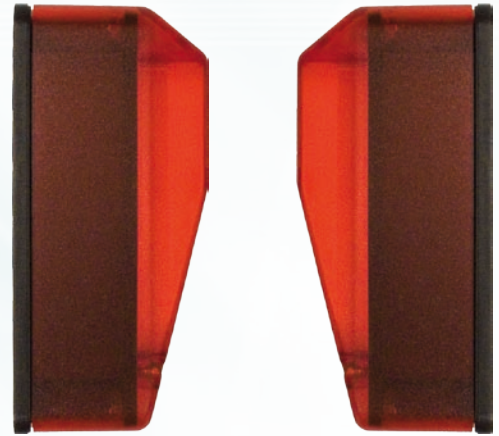
WITT
Sensoric

Optoelectronic systems

Operating gates safely

EL25 through-beam photoelectric switch

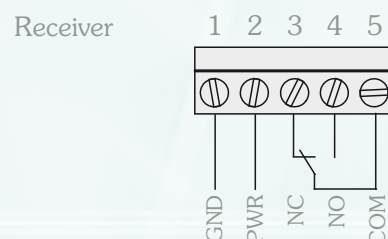
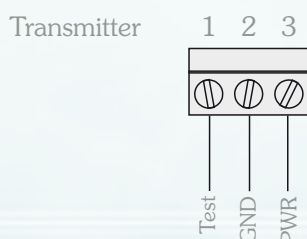
- ◇ Range 0.5...20m
- ◇ Insensitive against ambient light
- ◇ High degree of protection
- ◇ Optional cable entry
- ◇ Terminal compartment
- ◇ Test input
- ◇ Operating voltage 10...40VDC or 24VAC \pm 25%
- ◇ Protected against power supply polarity reversal
- ◇ Relay output
- ◇ Easy adjustment of the transmitter
- ◇ Soiling indication
- ◇ LED alignment indication



Technical Data

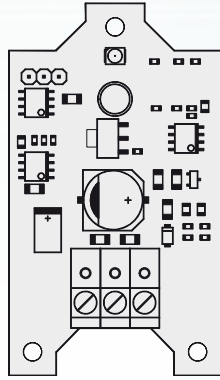
Range	0.5...20m	Relay delay	100ms, when the light beam is uninterrupted again, the relay picks up with 100ms delay
Operating voltage	10...40VDC 24VAC, \pm 25%	Indicators	transmitter: green = operate, flashing = test run receiver: red = light interrupted, green = light beam free flashing = spare critical function capacity (e.g.: soiling)
Current consumption	transmitter <25mA receiver <30mA	Type of connection	screw terminal max. 1.5mm ²
Type of light	IR, 880nm	Casing material	lower part: ABS-GF15% upper part: PMMA, red
Aperture	15° round angle	Degree of protection	IP67 according to EN60529
Output	Relay, changeover contact	Operating temperature	-25...60°C
Switch rating	min. 1mA/min. 5VDC max. 0.6A/50VAC max. 0.5A/48VDC	Storage temperature	-35...80°C
Type of switching	light-on or dark-on see configuration	Weight	approx. 60g
Test	positive or negative polarity	Size	86x44x39 mm ³ (LxWxH)
Switching threshold	>5.3V (positive) <4.2V (negative)		
Switching delay	<20ms, light beam interrupted		

Terminal Assignments



Configuration

position of the jumper



 testinput only for DC power supply

Transmitter

configuration of test run polarity



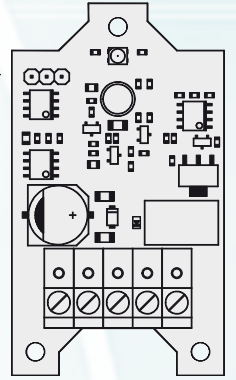
testinput active with U_B+



test with GND

The test input is activated after connecting the adjusted voltage to input 1 of the transmitter.
The transmitter is deactivated and the indicator LED flashes.

position of the jumper



Receiver



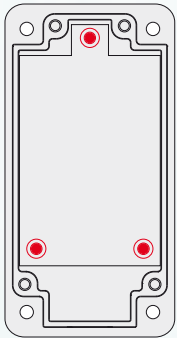
Dark-on



Light-on

When light-on the relay picks up, if the light beam is uninterrupted
When dark-on the relay picks up, if the light beam is interrupted

Fine Adjustment



After mounting the photo-switch can be adjusted using 3 screws.

Important note!



The optical sensor is spring-mounted. All 3 screws are unscrewed by 1 turn factory-made, the maximum is 3 turns.

The optical sensor is optimally aligned when the green LED lights up constantly.

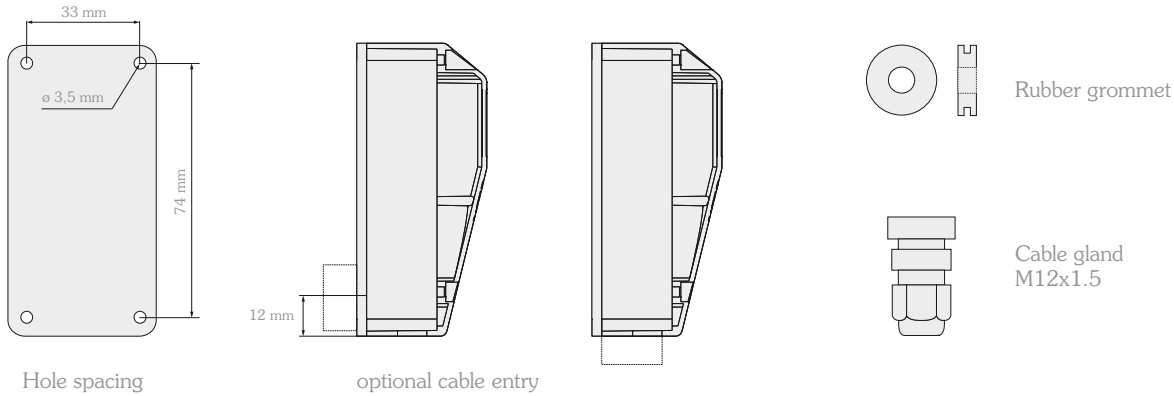


LED lights up green:
100 % of the cone of light meets the receiver



LED flashes red:
Less than 100 % of the cone of light meets the receiver

Hole spacing / optional cable entry



Note: The cable entry is moulded into the lower part of the casing and can be broken out. Either the rubber grommet or the cable gland (both supplied) can be used.

Accessories



HW-LS20 mounting bracket

Material: bright 1.5 1.4301 (V2A)

2 pieces for one set of light barriers.

Optoelectronic systems direct from the manufacturer

- Development
- Design
- Manufacture
- Sales

We make only optoelectronics – and we do it right



Witt Sensoric GmbH
Gradestraße 48-50 · 12347 Berlin · Germany
Tel.: +49 (0) 30 / 75 44 94-0
Fax: +49 (0) 30 / 75 44 94-11
info@witt-sensoric.de
www.witt-sensoric.de