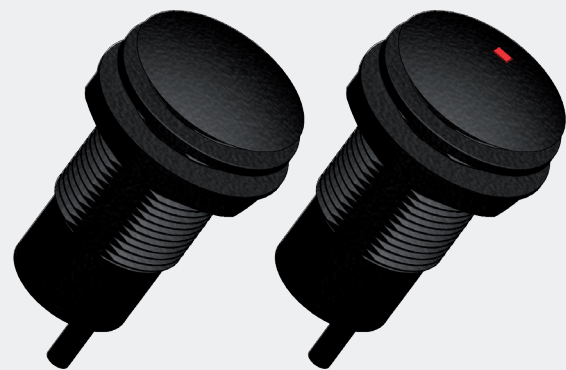
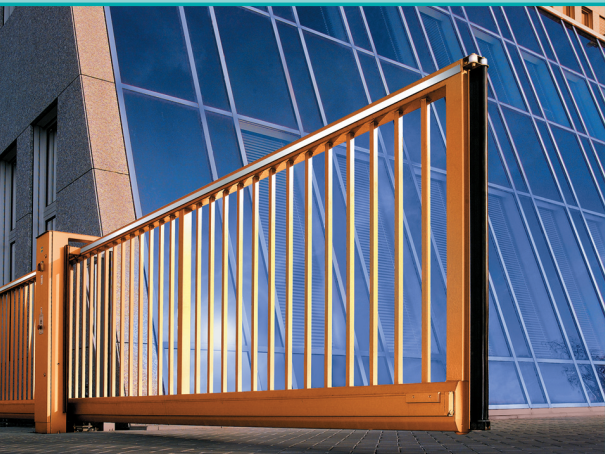


*Argos*  
*through-beam photoelectric switch*



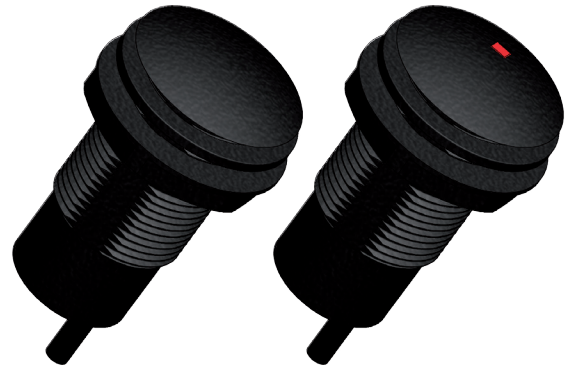
**WITT**  
Sensoric

Optoelectronic systems

*Operating gates safely*

## Argos through-beam photo switch, can be upgraded to a 4-channel system

- ◇ Large Range
- ◇ Dual power supply
- ◇ Transmitting channel selectable
- ◇ Insensitive against ambient light
- ◇ Fully epoxy resin filled
- ◇ High degree of protection
- ◇ Direct mounting, vandalism protected
- ◇ Nonwearing semi-conductor relay
- ◇ Soiling indication
- ◇ Easy adjustment



### Functional description

The Argos is designed for the direct mounting in profile housings.

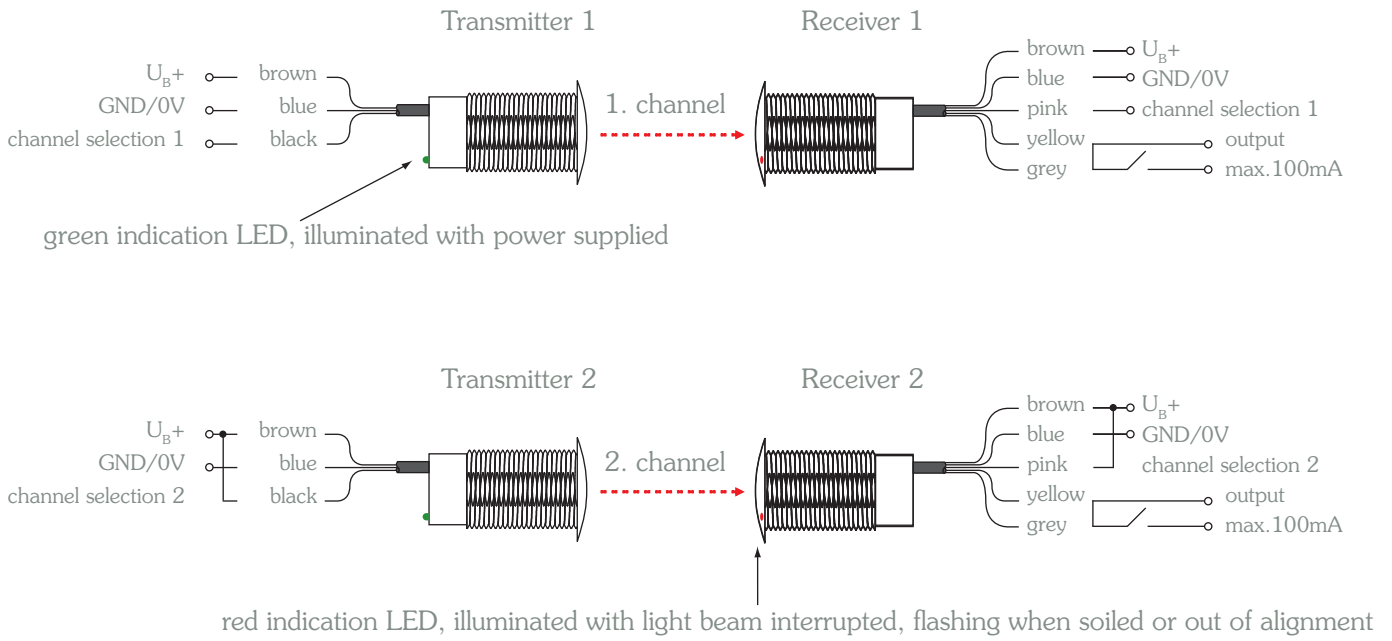
Due to the big aperture angle a safe function is assured at all times. With the M25x1.5 design the Argos matches with standard cable gland sizes. The high degree of protection can be obtained when mounted with the provided seal.

With the integrated second transmission channel a second light-stretch can be obtained without the two interfering with each other. For a longer life of the sensors an electrical potential-free closing contact is being used which is nonwearing and short-circuit protected.

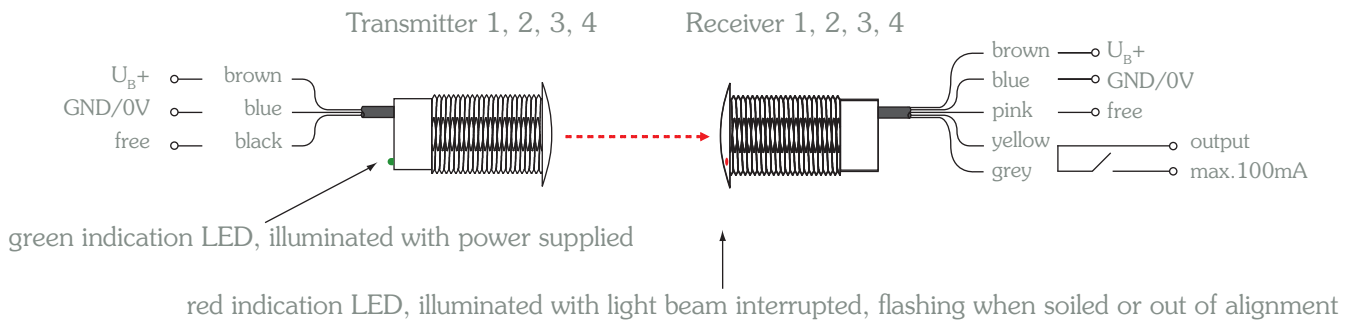
### Technical Data

Range	0,5...20m (approx.25m max range)	Indicationstransmitter receiver	green LED=in operation (wire side), red LED=light beam interrupted (front), flashing=critical function reserve (e.g. soiling)
Operating voltage	10...40VDC 10...30VAC	Type of connection	hard wired 3x0.25mm <sup>2</sup> transmitter, 5x0.25mm <sup>2</sup> receiver
Current consumption	transmitter typ. 10mA receivertyp.10mA	Housing material	lexan, IR transparent, cover, nuts, seal
Type of light	IR, modulated	Degree of protection	IP67 according to EN60529, fully epoxy resin filled
Aperture angle	15...20° round angle	Operating temp.	-20...60°C
Output	semi-conductor relay, short-circuit protected, potential-free NOC	Storage temp.	-20...60°C
Switching power	max. 40VDC, max.100mA	Size	M25x1,5x55mm <sup>3</sup>
Type of switching	light on, output closed with free light beam		
Response time	<10ms, detection of light beam interruption		
Output	switches with drop-out delay of 500ms if the light beam is free		

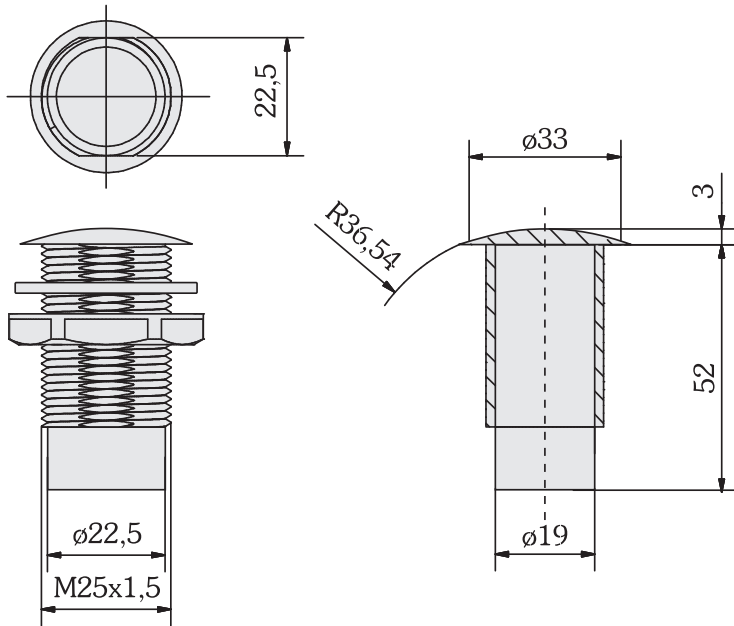
## Terminal Assignments / channel selection 2-channel version



## Terminal Assignments / channel selection 4-channel version



## Size



## Ordering details

Model	Order number	
2-channel version		
Transmitter Argos-T	1.114 530 040	4 meter
Receiver Argos-R	1.114 525 040	4 meter
4-channel version		
Argos-4-Channel-Set	1.114.534 040	4 meter
consisting of		
4 transmitters (Argos-T1-T4) with 4 meter cable		
and		
4 receivers (Argos R1-R4) with 4 meter cable		

The entire Argos series can be supplied in series with other cable lengths.

Optoelectronic systems direct from the manufacturer

- Development
- Design
- Manufacture
- Sales

*We make only optoelectronics – and we do it right*



Witt Sensoric GmbH  
Gradestraße 48-50 · 12347 Berlin · Germany  
Tel.: +49 (0) 30 / 75 44 94-0  
Fax: +49 (0) 30 / 75 44 94-11  
info@witt-sensoric.de  
www.witt-sensoric.de