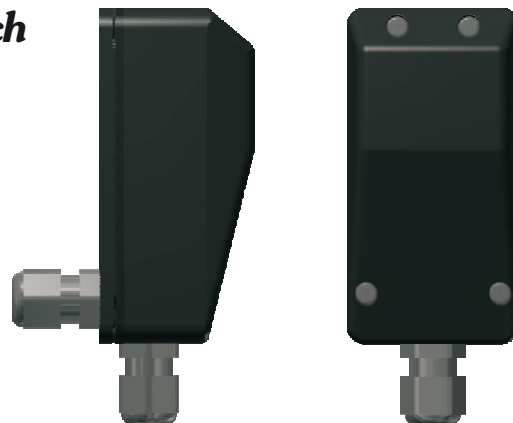


Argos 25 through-beam photo-electric switch

Argos 25 through-beam photo-electric switch

- Range max. 20m
- Insensitive against ambient light
- High degree of protection
- Optional cable entry
- Terminal compartment
- 2 transmitting channels
- Operating voltage 10-40VDC or 24VAC $\pm 25\%$
- Protected against power supply polarity reversal
- Relay output
- Easy adjustment of the transmitter
- Soiling indication
- LED alignment indication



Declaration of conformity

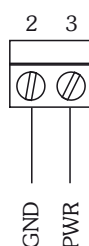
EMC directive 2004/108/EEC
EN 61000-6-2 and EN 61000-6-4



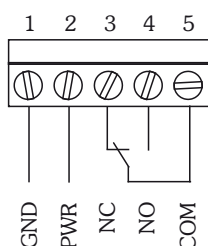
Technical data

Range	1.5...20m	Relay delay	when the light beam is uninterrupted again, the relay picks up with 500ms delay
Operating voltage	10...40VDC 24VAC, $\pm 25\%$	Indications	transmitter: yellow = operational receiver: red = light beam interrupted, yellow = light beam ok flashing = spare critical function capacity (e.g.: soiling)
Current consumption	transmitter <15mA receiver <30mA	Type of connection	screw terminal max. 1.5mm ²
Type of light	IR, 880nm	Casing material	lower part: ABS-GF15% upper part: PMMA, black
Aperture	15° round angle	Index of Protection	IP67, to EN60529
Output	Relay, changeover contact	Operating temperature	-25...60°C
Switch rating	min. 1mA/ min. 5VDC max. 0.6A / 50VAC max. 0.5A / 48VDC	Storage temperature	-35...80°C
Type of switching	light on, output closed with free light beam	Weight	approx. 60g
Output delay	<100ms, detection of light beam interruption	Size	86x44x39 mm ³ (LxWxH)

Terminal assignments



Transmitter



Receiver

Configuration

Transmitter

Definition of transmitting channel

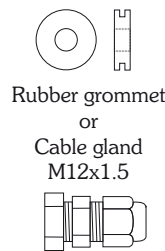
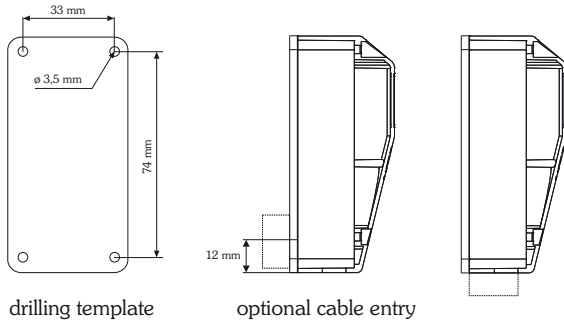


Receiver

Definition of receiving channel

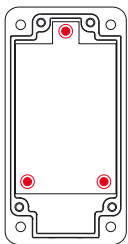


Drilling template / optional cable entry



Note: The cable entry is moulded into the lower part of the casing and can be broken out. Either the rubber grommet or the cable gland (both supplied) can be used.

Fine adjustment



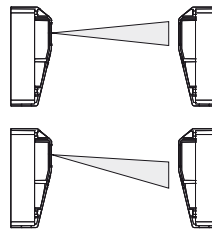
After mounting the photo-switch the light beam can be adjusted using 3 screws.



Important note!

The optical sensor is spring-mounted. All 3 screws are unscrewed by 1 turn factory-made, the maximum is 3 turns.

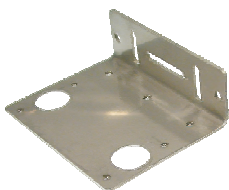
The optical sensor is optimally aligned when the yellow LED lights up constantly.



LED lights up yellow:
100 % of the cone of light meets the receiver

LED flashing:
Less than 100 % of the cone of light meets the receiver

Accessories

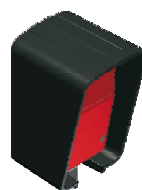


HW-LS20 mounting bracket

Material: bright 1.5 1.4301 (V2A)

Ordering details

HW-LS20 1.113 870



WSH20 rain cover

Material: PA6 GF15

Ordering details

WSH20 1.114 710

Ordering details

Model	item number
Argos 25-Transmitter	1.114 690
Argos 25-Receiver	1.114 695
Included in the scope of supply:	2 cable glands M12x1.5 and 2 pass-through grommets